

DrayTek

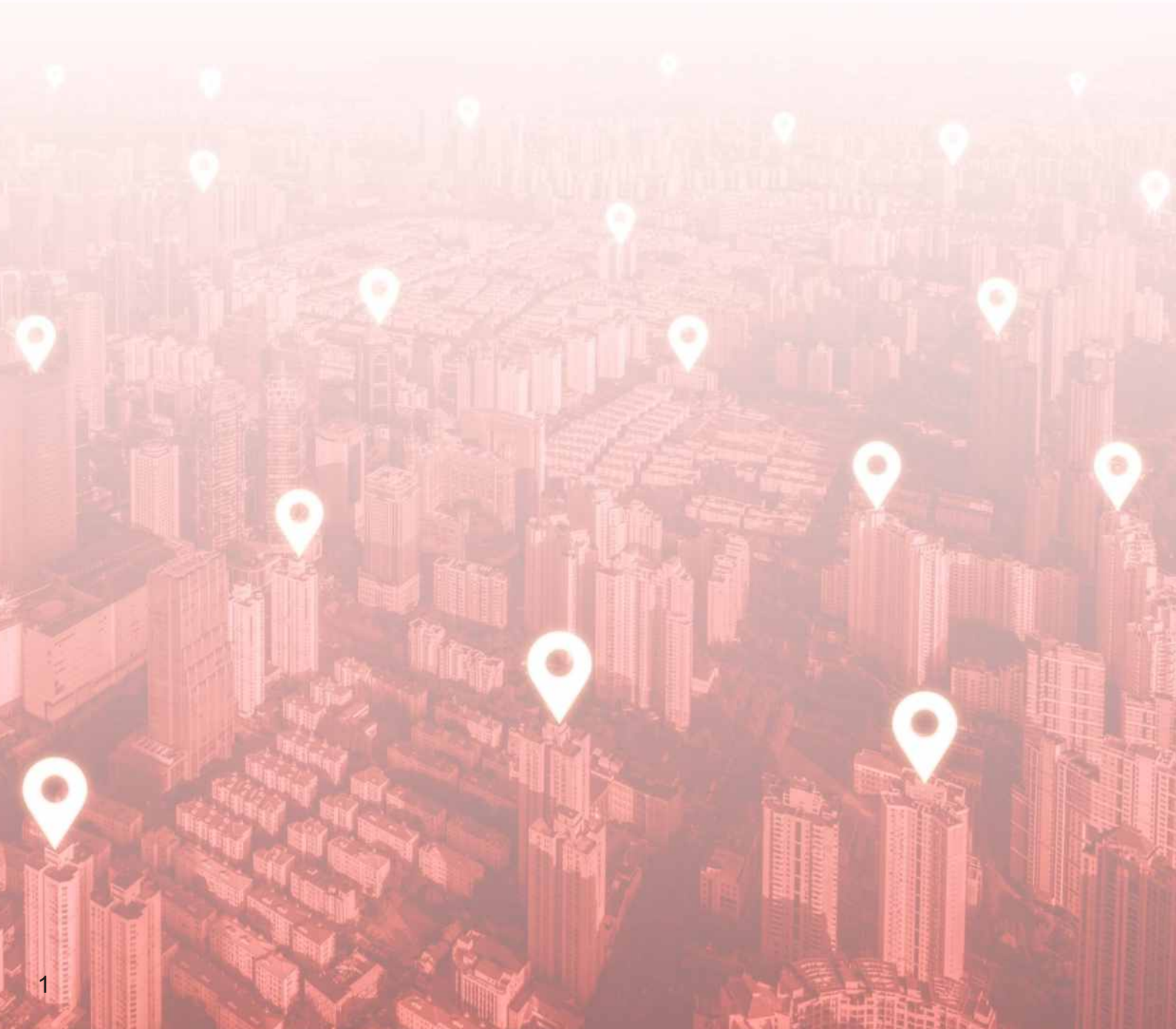
Reliable Networking Solutions



DATABOOK 2020

DrayTek

Founded in 1997, DrayTek Corporation is a Taiwan-based manufacturer of networking equipment and management systems. From ISDN, VDSL to LTE, DrayTek has always been endeavouring to provide SMBs and professional with reliable, fast and secure connections. Our mission is to deliver high-quality and high-integrated networking services at an affordable price, and be your reliable networking solution partner.



Contents

Router

Broadband	3-6
xDSL	7-8
LTE	9-10

Wireless AP	11-14
Switch	15-18
Network Management	19-20
Accessories	21-22
Feature Matrix	23-32

Vigor2135 Series

Gigabit Broadband Router



- Gigabit Ethernet WAN port
- 2 USB ports for 3G/4G backup or network storage
- 2 Simultaneous VPN Tunnels including maximum 2 SSL VPN Tunnels
- SPI Firewall with content filtering by application, URL keyword, and web category
- Bandwidth Management & Intelligent VoIP QoS to optimize call quality
- Central Management for VigorAP
- Support DrayDDNS

	WLAN	
	2.4 GHz	5 GHz
Vigor2135		
Vigor2135 ac	●	●

Vigor2915 Series

Dual-WAN Security Router



- Dual-WAN for load-balancing or redundancy
- 1 USB port for 3G/4G WAN, printer, or network storage
- 16 concurrent VPN tunnels including up to 8 SSL VPN
- Bandwidth management & QoS for the best VoIP quality
- SPI Firewall with Content Filtering by Apps, URL keyword, and web category
- IPv6 Support
- Support DrayDDNS

	WLAN	
	2.4 GHz	5 GHz
Vigor2915		
Vigor2915 ac	●	●

Vigor2927 Series

Dual-WAN Security Router



- Dual-WAN for load-balancing or redundancy
- AX3000 Wi-Fi 6 dual-band wireless interface (2927ax)
- 50 simultaneous VPN tunnels, up to 25 SSL VPN
- SPI Firewall and Content Filtering
- Central Management for VigorAP & VigorSwitch
- Support DrayDDNS

	WLAN	
	2.4 GHz	5 GHz
Vigor2927		
Vigor2927 ac	•	•
Vigor2927 ax	•	•

Vigor2952 Series

Dual-WAN Security Firewall



- Dual Gigabit Ethernet WAN
- 2 USB for 3G/4G USB mode, printer, network storage or temperature sensor
- Up to 4 WAN for load-balancing and failover
- 200 simultaneous VPN tunnels including up to 50 SSL VPN
- High Availability (Hardware Redundancy) support
- Central Management for VigorAP & VigorSwitch
- PoE+ capable ports available on Vigor2952P
- Support DrayDDNS

	PoE
Vigor2952	
Vigor2952P	•

Vigor2962 Series

2.5G Security VPN Router



- 2 LAN/WAN configurable ports (1 x 2.5GbE & 1 x SFP/GbE combo)
- 4 Gigabit Ethernet LAN ports
- 2 USB for 3G/4G USB mode, printer, network storage or temperature sensor
- 200 simultaneous VPN tunnels including up to 50 SSL VPN
- Support High Availability (hardware redundancy)
- PoE+ capable ports available on Vigor2962P
- Central Management for VigorAP & VigorSwitch
- Support DrayDDNS

	PoE
Vigor2962	
Vigor2962P	●

Vigor3220

Multi-WAN Security Router



- 4 Gigabit WAN Port for load balancing or failover
- 2 USB for 3G/4G USB mode, printer, network storage or temperature sensor
- 200 simultaneous VPN tunnels including up to 50 SSL VPN
- SPI Firewall with content filtering by application, URL keyword, and web category
- Bandwidth Management & QoS for the best VoIP quality
- Central Management for VigorAP and VigorSwitch
- Support DrayDDNS

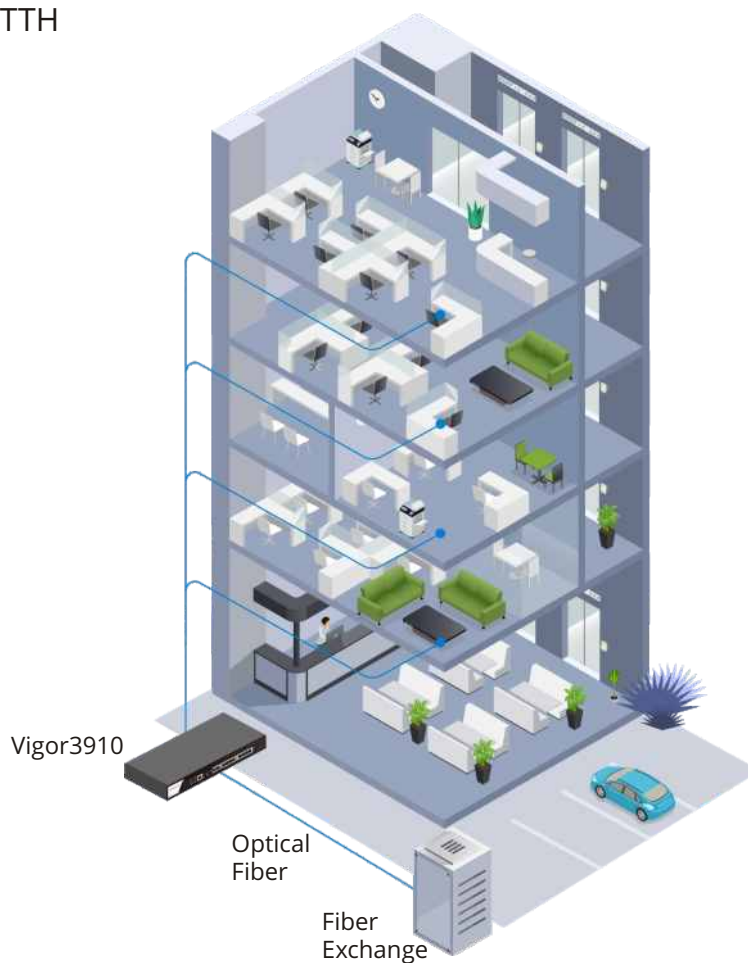
Vigor3910

High Performance 10G Router

- 8 x WAN/LAN switchable ports & 4 x fixed LAN ports
- 2 x 10G SFP+ & 2 x 2.5G Ethernet for WAN or LAN
- Powerful 1.2GHz Quad-Core Processor
- 9 Gbps NAT throughput, 150k NAT sessions
- 500 simultaneous VPN tunnels throughput over 3 Gbps
- Supported and managed by VigorACS
- Support DrayDDNS



Applications for FTTB/FTTH



Vigor160 Series

35b/G.Fast Modem



- Support G.Fast (Vigor166)
- Support VDSL2 35b Super Vectoring/ADSL2+
- Multi-PVC for triple-play applications

		┌ G.Fast ┐		
		35b	106MHz	212MHz
	Vigor165	•		
Gen1	Vigor166	•	•	
Gen2	Vigor166	•	•	•

Vigor2765/2766 Series

35b/G.Fast Security Router



- Support G.Fast (Vigor2766 series)
- Support VDSL2 35b Super Vectoring/ADSL2+
- Robust Firewall & Security for Internet activities
- 2 VPN connections for remote access and LAN-to-LAN
- Bandwidth Management with intelligent VoIP QoS
- Support DrayDDNS

		┌ G.Fast ┐			┌ WLAN ┐	
		35b	106MHz	212MHz	2.4GHz	5GHz
	Vigor2765	•				
	Vigor2765ac	•			•	•
Gen1						
	Vigor2766	•	•			
	Vigor2766ac	•	•		•	•
Gen2						
	Vigor2766	•	•	•		
	Vigor2766ac	•	•	•	•	•

Vigor2865/2866 Series

35b/G.Fast Firewall Security Router



- Support G.Fast (Vigor2866 series)
- Support VDSL2 35b Super Vectoring/ADSL2+
- 2 USB ports for 3G/4G modem or extra storage
- 32 Simultaneous VPN Tunnels
- SPI Firewall with Content Filtering
- Central Management for VigorAP & VigorSwitch
- Support DrayDDNS

	G.Fast			WLAN	
	35b	106MHz	212MHz	2.4GHz	5GHz
Vigor2865	•				
Vigor2865ac	•			•	•
Gen1					
Vigor2866	•	•			
Vigor2866ac	•	•		•	•
Gen2					
Vigor2866	•	•	•		
Vigor2866ac	•	•	•	•	•



Fixed WAN Port

- ① 1 x RJ-11,
VDSL2 35b/ADSL2+

Fixed LAN Port

- ② 5 x GbE, RJ-45

Switchable
WAN/LAN Port

- ③ 1 x GbE, RJ-45

USB Port

- ④ 2 x USB 2.0

VigorLTE 200 Series

LTE Router



- Dual SIM for 3G/4G/LTE Cellular Connectivity with speed up to 150 Mbps
- Robust Firewall & Security for Internet activities
- 2 VPN connections for remote access and LAN-to-LAN
- Bandwidth Management with intelligent VoIP QoS
- Support DrayDDNS

WLAN	
VigorLTE 200	
VigorLTE 200n	●

Vigor2620 LTE Series

LTE Router



- Dual SIM for 3G/4G/LTE Cellular Connectivity with speed up to 150 Mbps
- VDSL2/ADSL2+ Modem Router
- Robust Firewall & Security for Internet activities
- 2 VPN connections for remote access and LAN-to-LAN
- Bandwidth Management with intelligent VoIP QoS
- Support DrayDDNS

	DSL	WLAN
Vigor2620L	●	
Vigor2620Ln	●	●

Vigor2865/2866 LTE Series

LTE Router



- SIM-base, 3G/4G LTE Router, CAT 6 up to 300Mbps connection speed
- Support G.Fast (Vigor2866 LTE series)
- Support VDSL2 35b Super Vectoring/ADSL2+
- 1 USB port for 3G/4G modem or extra storage
- 32 Simultaneous VPN Tunnels
- SPI Firewall with Content Filtering
- Central Management for VigorAP & VigorSwitch
- Support DrayDDNS

	G.Fast			WLAN	
	35b	106MHz	212MHz	2.4GHz	5GHz
Vigor2865L	•				
Vigor2865Lac	•			•	•
Gen1					
Vigor2866L	•	•			
Vigor2866Lac	•	•		•	•
Gen2					
Vigor2866L	•	•	•		
Vigor2866Lac	•	•	•	•	•

Vigor2927 LTE Series

LTE Router



- SIM-base, 3G/4G LTE Router, CAT 6 up to 300Mbps connection speed
- Dual-WAN for load-balancing or redundancy
- 50 simultaneous VPN tunnels, up to 25 SSL VPN
- 1 USB port for 3G/4G modem or extra storage
- SPI Firewall and Content Filtering
- Central Management for VigorAP & VigorSwitch
- Support DrayDDNS

	WLAN	
	2.4GHz	5GHz
Vigor2927L		
Vigor2927Lac	•	•

VigorAP 810

802.11n Access Point



- 802.11n compliant with 2x2 MIMO
- Delivers data rate of up to 300 Mbps
- 5-port Fast Ethernet Switch including 1 PoE-capable port
- 1 USB 2.0 for printer or USB thermometer
- 2 LAN Subnet, up to 4 SSIDs with unique Subnet, VLAN, Access Control, Bandwidth Limit settings
- Built-in RADIUS server for 802.1x authentication
- AirTime Fairness support
- Improve roaming experience by Fast Roaming & AP-assisted Roaming
- Provide multiple operating modes - AP, Bridge, WDS, and Universal Repeater
- Support both stand-alone and controller-based setup

VigorAP 802

11ac Dual-Band Wall Plug AP



- Concurrent dual band
- Support 2x2 11ac
- Data rate up to 867Mbps in 5GHz and up to 300Mbps in 2.4GHz
- 1 GbE port
- Plug-n-Play Meshing (Mesh node)
- Airtime Fairness
- Band Steering
- AP-Assisted Roaming
- RADIUS client for 802.1x authentication
- Compliant with Central AP Management of Vigor Router and VigorACS

VigorAP 903

11ac Dual-Band Wireless Mesh AP



- Concurrent dual band
- Support 2x2 11ac WAVE2
- Data rate up to 867Mbps in 5GHz and up to 400Mbps in 2.4GHz
- 5 GbE port (including 1 PoE) + 1 USB Port
- Plug-n-Play Meshing
- Airtime Fairness
- Band Steering
- AP-Assisted Roaming
- Built-in RADIUS server for 802.1x authentication
- Compliant with Central AP Management of Vigor Router and VigorACS

VigorAP 912C

802.11ac Ceiling-mount AP



- Concurrent Dual-band 802.11ac with 2x2 MIMO
- Delivers data rate of up to 867 Mbps in the 5GHz band and 300 Mbps in the 2.4GHz band
- Plug-n-Play Meshing
- 1 x PoE-capable Gigabit Ethernet port
- AirTime Fairness and Band Steering
- AP-Assisted Roaming
- Built-in RADIUS server for 802.1x authentication
- Compliant with Vigor central AP management and VigorACS

VigorAP 960C

802.11ax Ceiling-mount AP



- Concurrent Dual-band 802.11ax with 2x2 MIMO
- AX3000 Wi-Fi 6 dual-band wireless interface
- Plug-n-Play Meshing
- 1 x PoE-capable Gigabit Ethernet port
- AirTime Fairness and Band Steering
- AP-Assisted Roaming
- Built-in RADIUS server for 802.1x authentication
- Compliant with Vigor central AP management and VigorACS

VigorAP 920C/1000C

802.11ac Ceiling-mount AP



- Concurrent tri-band (VigorAP 1000C)
- Support dual 2x2 11ac WAVE2
- Data rate up to 867Mbps in 5GHz and up to 400Mbps in 2.4GHz
- 2 GbE port (including 1 PoE)
- Airtime Fairness
- Band Steering
- AP-Assisted Roaming
- Built-in RADIUS server for 802.1x authentication
- Compliant with Central AP Management of Vigor Router and VigorACS

	Dual-band	Tri-band
VigorAP 920C	●	
VigorAP 1000C		●

VigorAP 918R Series

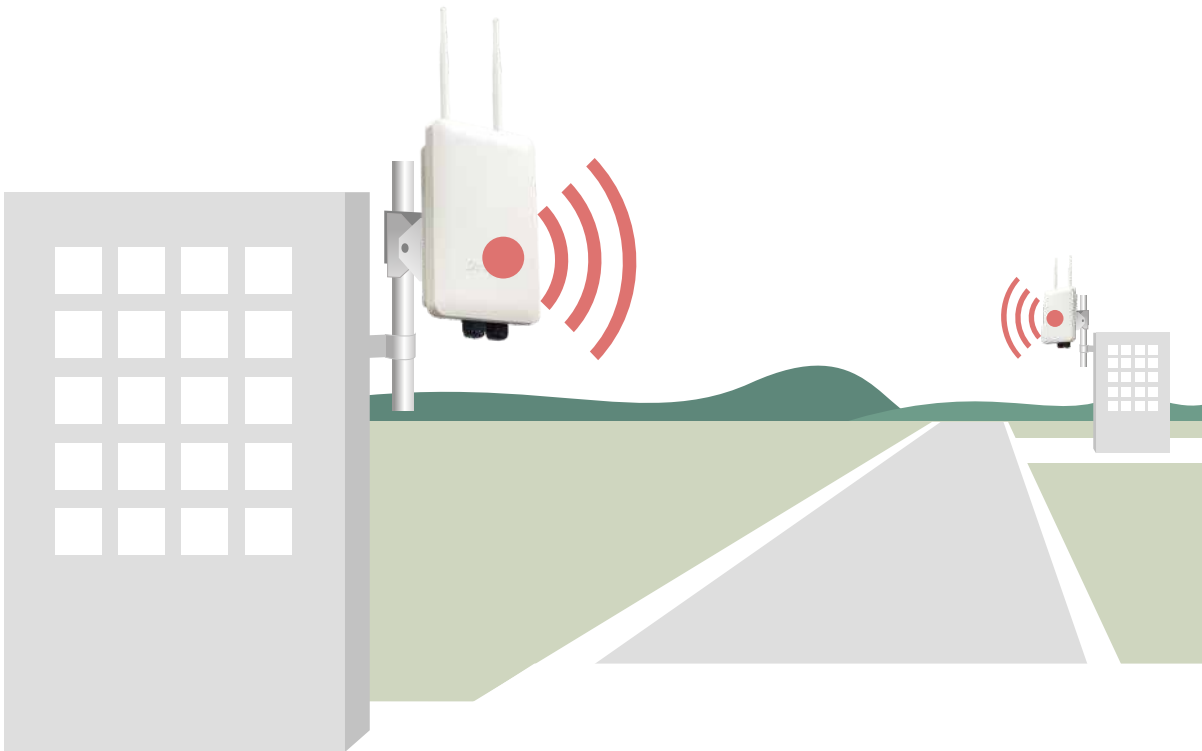
11ac Dual-Band Outdoor AP



- IP 67-rated enclosure for outdoor usage, water-proof and dust-resistance
- 2.4/5GHz Dual band WiFi with 2x2 MIMO
- Secure VLAN/SSID grouping, up to128 WLAN clients manageable per Radio
- IEEE 802.3az/Energy Efficient Ethernet PoE port
- Compatible with AP Management for centralized management
- High RF power for long-distance and expansive coverage
- Built-in 5GHz Direction Antenna selectable (918RPD)

	PoE Out	Directional Antenna
VigorAP 918R		
VigorAP 918RPD	●	●

Point to point



VigorSwitch G1080

Smart Lite Gigabit Switch

- Simple and Easy to use network switch
- 8 Gigabit capable ports
- Support HTTP Web Management
- QoS for application traffic prioritization
- Support 8 VLANs & 1 Trunking Group
- Power saving by 802.3az Energy Efficient Ethernet
- Support Loop Detection & Prevention



VigorSwitch P1092

PoE Smart Lite Gigabit Switch

- 8 Gigabit PoE+ capable ports
- 2 Gigabit SFP ports
- 110-watt PoE power budget
- QoS with 4 priority queues and rate limiting
- Support 10 VLANs & 2 Trunking Groups
- Support Loop Detection & Prevention



VigorSwitch G1085/P1085

Web Smart Gigabit Switch

- 8 Gigabit capable ports
- PoE power budget up to 140 watts (P1085)
- Dual-stack IPv4/IPv6 conformity for the next generation network
- Support LLDP and SNMP for best management software compatibility
- Advanced QoS for application traffic prioritization
- Voice VLAN for easy VoIP devices setup and prioritize
- Compliant with Switch Management of Vigor Router



VigorSwitch G1280/P1280

Web Smart Gigabit Switch

- 24 Gigabit capable ports & 4 combo Gigabit SFP/RJ-45 ports
- 24 Gigabit PoE+ capable ports with PoE power budget up to 340 watts (P1280)
- Auto Voice VLAN for easy VoIP deployment and best call quality
- QoS with 8 priority queues and rate limiting
- Dual-stack IPv4/IPv6 support
- Compliant with Switch Management of Vigor Router



VigorSwitch G2121/P2121

PoE L2 Managed Gigabit Switch

- 8 Gigabit capable ports & 4 Gigabit SFP/RJ-45 combo ports
- 8 Gigabit PoE+ capable ports with PoE power budget up to 140 watts (P2121)
- VLAN configuration based on 802.1q tag, MAC address, and protocol
- Auto Voice VLAN and Auto Surveillance VLAN to optimize call and video quality
- Secure Local Network by 802.1x Port Security, ACL, IP Source Guard ,and DHCP Snooping
- Support IPv6 with MLD Snooping, IPv6 ACL, and IPv6 DNS Resolver
- Authentication by a local database, multiple RADIUS, and TACACS+ servers
- Support SNMP v1/v2c/v3, RMON, and Syslog for network monitoring
- Compliant with Switch Management of Vigor Router
- Static Route



VigorSwitch G2280/P2280

L2 Managed Gigabit Switch

- 24 Gigabit Ethernet ports + 4 Gigabit SFP/RJ-45 combo ports
- 24 Gigabit PoE+ capable ports with PoE power budget up to 385 watts (P2280)
- VLAN configuration based on 802.1q tag, MAC address, and protocol
- Auto Voice VLAN and Auto Surveillance VLAN to optimize call and video quality
- Secure Local Network by 802.1x Port Security, ACL, IP Source Guard and DHCP Snooping
- Support IPv6 with MLD Snooping, IPv6 ACL, and IPv6 DNS Resolver
- Authentication by local database, multiple RADIUS, and TACACS+ servers
- Support SNMP v1/v2c/v3, RMON, and Syslog for network monitoring
- Compliant with Switch Management of Vigor Router
- Static Route



VigorSwitch G2280x/P2280x

L2+ Managed Switch

- 24 Gigabit capable ports & 4 10G SFP+ ports
- 24 Gigabit PoE+ capable ports with PoE power budget up to 400 watts (P2280x)
- VLAN configuration based on 802.1q tag, MAC address, and protocol
- Auto Voice VLAN and Auto Surveillance VLAN to optimize call and video quality
- Secure Local Network by 802.1x Port Security, ACL, IP Source Guard and DHCP Snooping
- Support IPv6 with MLD Snooping, IPv6 ACL, and IPv6 DNS Resolver
- Authentication by local database, multiple RADIUS, and TACACS+ servers
- Support SNMP v1/v2c/v3, RMON, and Syslog for network monitoring
- Compliant with Switch Management of Vigor Router and VigorACS
- Static Route
- DHCP Server



VigorSwitch 2540x Series

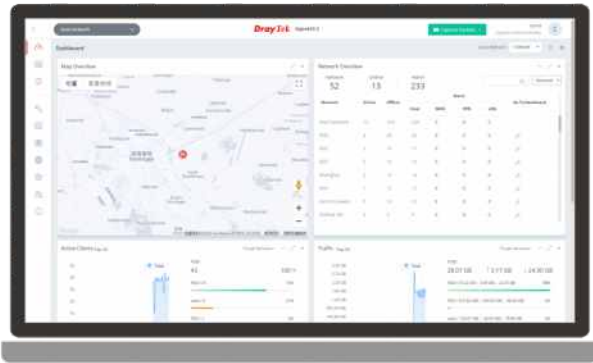
L2+ Managed Switch

- 48 x Gigabit capable ports & 6 x 10G SFP+ ports
- 48 x Gigabit PoE+ capable ports with PoE power budget up to 400 watts (P2540x)/800 watts (P2540xh)
- VLAN configuration based on 802.1q tag, MAC address, and protocol
- Auto Voice VLAN and Auto Surveillance VLAN to optimize call and video quality
- Secure Local Network by 802.1x Port Security, ACL, IP Source Guard and DHCP Snooping
- Authentication by local database, multiple RADIUS, and TACACS+ servers
- Support SNMP v1/v2c/v3, RMON, and Syslog for network monitoring
- Compliant with Switch Management of Vigor Router and VigorACS
- Support IPv6 with MLD Snooping, IPv6 ACL, and IPv6 DNS Resolver
- Static Route
- DHCP Server



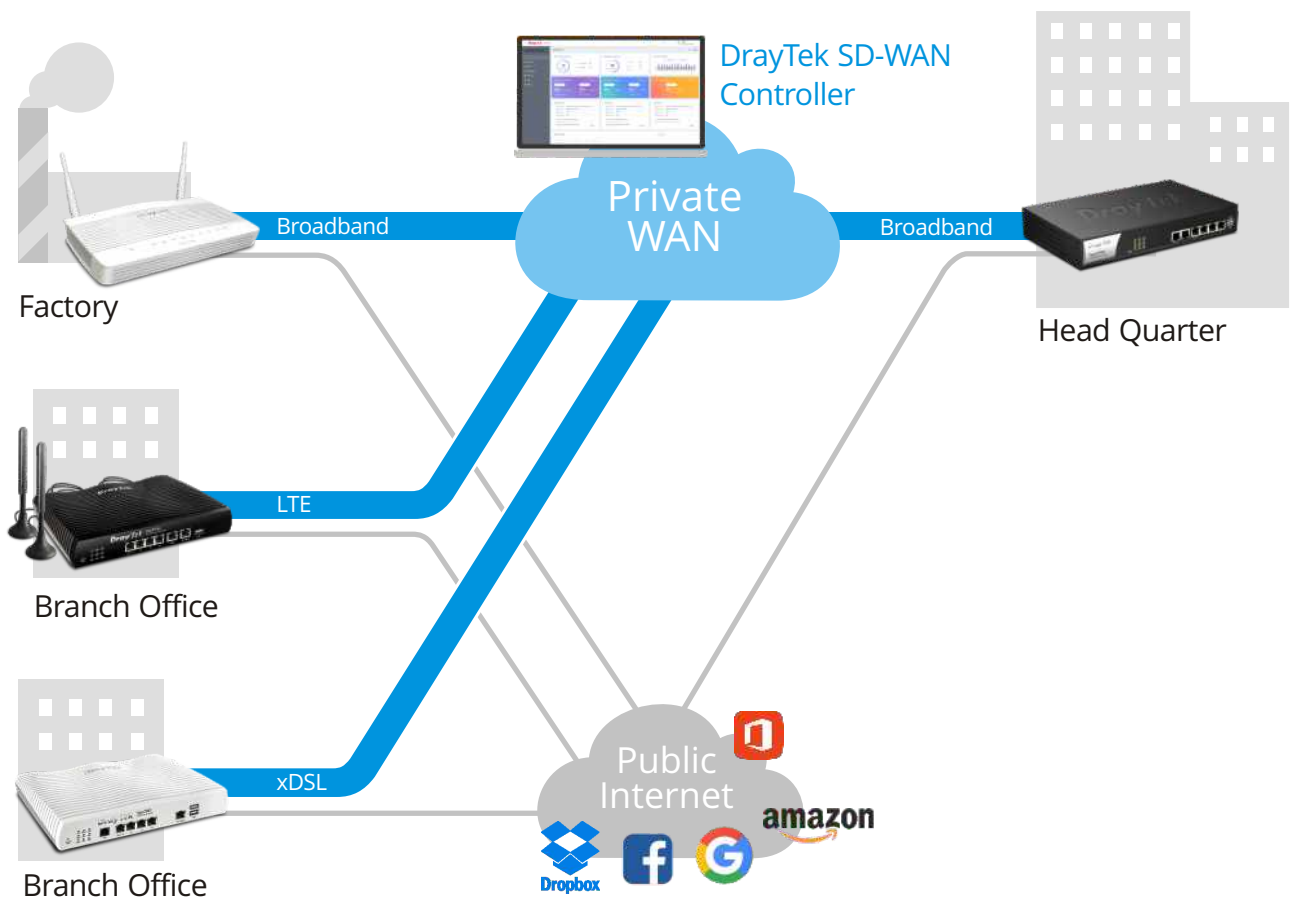
VigorACS 3

Integrated IT Management Solution and SD-WAN



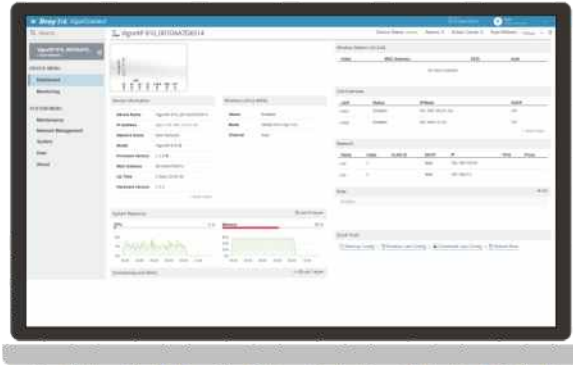
- Remote Device Provisioning
- Auto-VPN for Hub-and-Spoke or Mesh topology
- Intelligent Routing
- Real-Time Monitoring of Link and Devices
- Connection Statistics Report
- Scheduled Device Maintenance
- Multi-Level Administrator Privileges

SD-WAN Solution

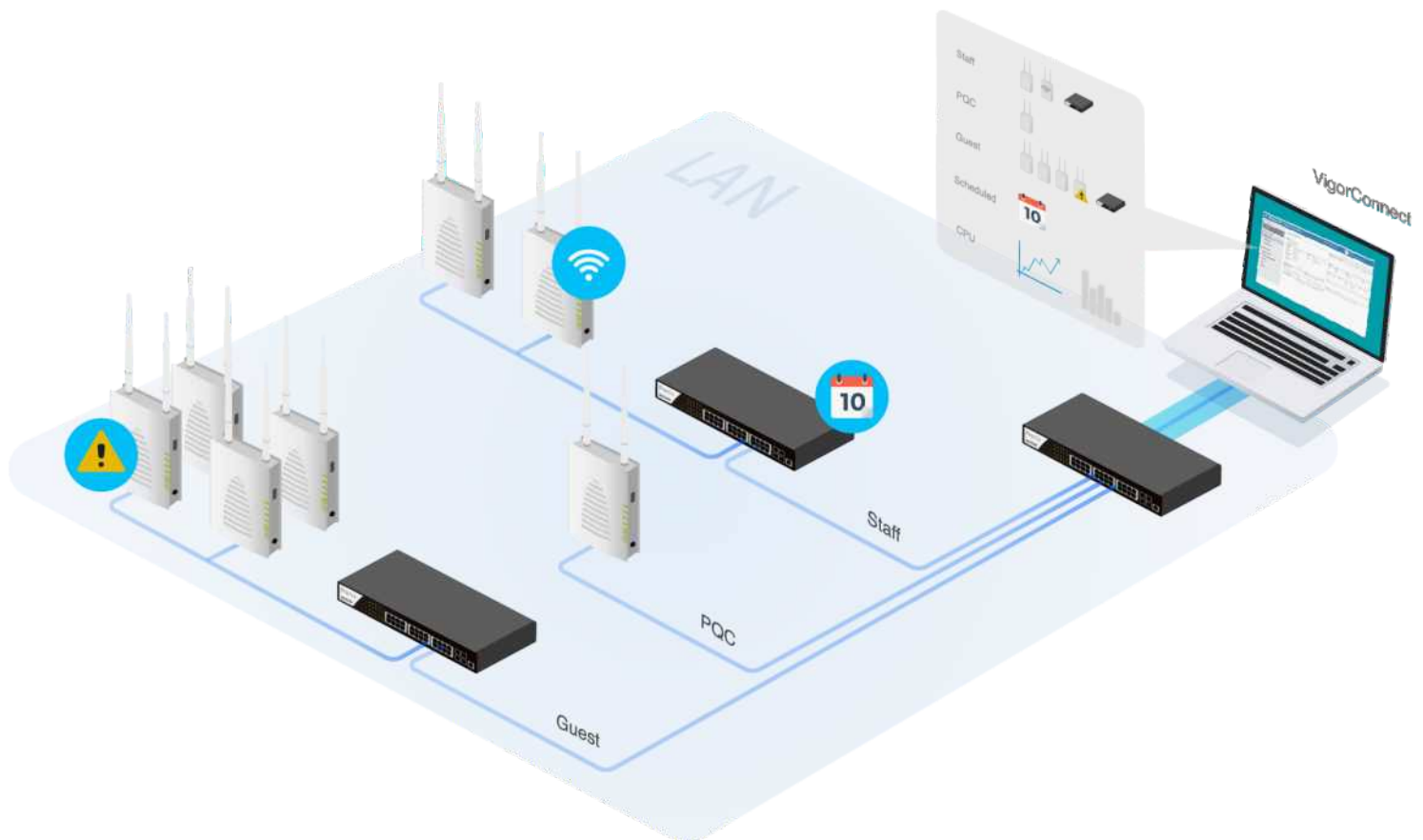


VigorConnect

Local Network Management Software for DrayTek Devices



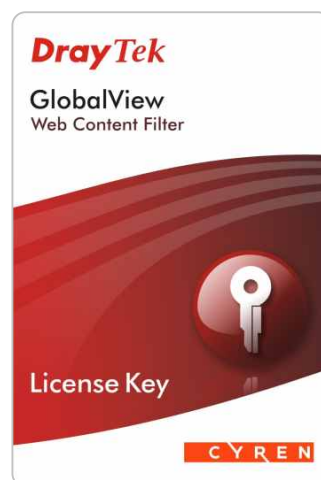
- Automatically discover all VigorAPs/VigorSwitches on your LAN and manage up to 100 devices
- Provision AP profile to APs in a network to set up several VigorAPs; setup the VLAN or PoE for selected Switches
- Get notified when an AP/Switch lost connection with the VigorConnect Server
- Network insights about AP, client, and CPU usage, etc. over a specified period
- Schedule an off-hour firmware upgrade or configure backup/restore



WCF License

Real-Time Dynamic Web Content Classification Service

- Zero-Hour Security for identifying outbreaks on their way to users, instead of reacting to their pain.
- Innovative Data Cloud Technology for overcoming local storage limitations and satisfying customers' specific needs.



DAC-CX10

10G SFP+ Cable

- Support for multi-gigabit data rates up to 10Gb/s
- Data rates backward compatible to 1Gb/s
- Hot Pluggable SFP+



DrayTek Rack-mount Plate

The metal rack-mount plate is designed for sustaining the device of Vigor2865/Vigor2927 series inside the 19-inch cabinet.



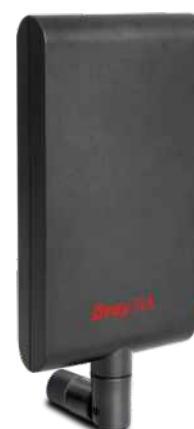
USB Thermometer

Temperature Sensor for DrayTek routers

- Direct router/AP connection
- Outer sensor included (1M)
- Data is displayed in °F or °C
- Informative Web Interface
- Alarm Max/Min Thresholds
- Continuous Reporting to syslog
- Email & SMS Reporting on threshold breach
- RoHS Compliant



Antenna Series



	ANT-1205	ANT-2520
Description	2.4GHz/5GHz Indoor Omni-Directional Antenna	2.4GHz/5GHz Indoor Directional Patch Antenna
Environment	Indoor	Indoor
Frequency Range	2400~2500 MHz 5150~5850 MHz	2400~2500 MHz 5150~5875 MHz
Peak Gain @ 2.4GHz	5 dBi	7.5 dBi
@ 5GHz	4.5 dBi	10 dBi
VSWR @ 2.4GHz	< 2.0	≤2.0
@ 5GHz	< 2.0	
Polarization	Linear	Vertical, Linear
HPBW/Horizontal @ 2.4GHz		70°
@ 5GHz		60°
HPBW/Vertical @ 2.4GHz		60°
@ 5GHz		30°
Power Handling	1W	2W
Impedance	50 Ω	50 Ω
Connector	RP SMA Plug	RP SMA Plug

Broadband Router

		Vigor2135 series		Vigor2915 series		Vigor2927 series		
		2135	2135ac	2915	2915ac	2927	2927ac	2927ax
WAN	Fixed WAN Port	1 x GbE		1 x GbE		1 x GbE		
	WAN/LAN Switchable Port			1 x GbE		1 x GbE		
LAN	Fixed LAN Port	4 x GbE		3 x GbE		5 x GbE		
	LAN Subnet	2		4		8		
	DMZ Port					1		
USB Port		2		1		2		
NAT Sessions		50,000		50,000		60,000		
WLAN	Standard		11a/b/g/n/ac		11a/b/g/n/ac		11a/b/g/n/ac wave 2	11a/b/g/n/ac wave 2/ax
	2.4GHz		•		•		•	•
	5GHz		•		•		•	•
	MIMO		2 x 2		2 x 2		2 x 2	2 x 2
	Antennas (Detachable)		2		2		2	2
VPN	Concurrent VPN Tunnels	2		16		50		
	Max. Concurrent SSL VPN	2		8		25		
Routing	Static Route	•		•		•		
	Policy Route	•		•		•		
	RIP	•		•		•		
	BGP					•		
	OSPF							
CSM	APP Enforcement	•		•		•		
	URL & Keywords Filter	•		•		•		
	Web Content Filter	•		•		•		
	DNS Filter	•		•		•		

Vigor2952 series	Vigor2962 series	Vigor3220	Vigor3910
2952/P	2962/P	3220	3910
1 x GbE + 1 x GbE/SFP Combo		4 x GbE	
	1 x 2.5GbE + 1 x GbE/SFP Combo		2 x 2.5GbE + 4 x GbE + 2 x SFP+
4 x GbE	4 x GbE	1 x GbE	4 x GbE
8	20	8	50
1		1	
2	2	2	2
60,000	100,000	100,000	150,000
200	200	200	500
50	50	50	200
•	•	•	•
•	•	•	•
•	•	•	•
•	•	•	•
	•		•
•	•	•	•
•	•	•	•
•	•	•	•
•	•	•	•

xDSL Router

		Vigor160 series		Vigor2765 series		Vigor2766 series	
		165	166	2765	2765ac	2766	2766ac
WAN	Fixed WAN Port	1 x A/VDSL /35b	1 x A/VDSL /35b/G.Fast	1 x A/VDSL/35b		1 x A/VDSL/35b/G.Fast	
	WAN/LAN Switchable Port			1 x GbE		1 x GbE	
LAN	Fixed LAN Port	2 x GbE		3 x GbE		3 x GbE	
	LAN Subnet	1		2		2	
	DMZ Port						
USB Port				2		2	
NAT Sessions		10,000		50,000		50,000	
WLAN	Standard				11a/b/g/n/ ac wave 2		11a/b/g/n/ ac wave 2
	2.4GHz				•		•
	5GHz				•		•
	MIMO				2 x 2		2 x 2
	Antennas (Detachable)				2		2
VPN	Concurrent VPN Tunnels			2		2	
	Max. Concurrent SSL VPN			2		2	
Routing	Static Route	•		•		•	
	Policy Route			•		•	
	RIP	•		•		•	
	BGP						
	OSPF						
CSM	APP Enforcement			•		•	
	URL & Keywords Filter	•		•		•	
	Web Content Filter			•		•	
	DNS Filter			•		•	

Vigor2865 series		Vigor2866 series	
2865	2865ac	2866	2866ac
1 x AVDSL/35b		1 x AVDSL/35b/G.Fast	
1 x GbE		1 x GbE	
5 x GbE		5 x GbE	
8		8	
1		1	
2		2	
60,000		60,000	
	11a/b/g/n/ ac wave 2		11a/b/g/n/ ac wave 2
	•		•
	•		•
	2 x 2		2 x 2
	2		2
32		32	
16		16	
•		•	
•		•	
•		•	
•		•	
•		•	
•		•	
•		•	
•		•	

4G LTE Router

		VigorLTE 200 series		Vigor2620 LTE series		Vigor2865 LTE series	
		200	200n	2620L	2620Ln	2865L	2865Lac
WAN	Fixed WAN Port	2 x LTE		1 x A/VDSL + 2 x LTE		1 x A/VDSL/35b + 1 x LTE	
	WAN/LAN Switchable Port	1 x GbE		1 x GbE		1 x GbE	
LAN	Fixed LAN Port	1 x GbE		1 x GbE		5 x GbE	
	LAN Subnet	2		2		8	
	DMZ Port					1	
USB Port						1	
NAT Sessions		30,000		30,000		60,000	
WLAN	Standard		11b/g/n		11b/g/n		11a/b/g/n/ac wave 2
	2.4GHz		•		•		•
	5GHz						•
	MIMO		2 x 2		2 x 2		2 x 2
	Antennas (Detachable)		2 (Hidden)		2 (Hidden)		2
VPN	Concurrent VPN Tunnels	2		2		32	
	Max. Concurrent SSL VPN	2		2		16	
Routing	Static Route	•		•		•	
	Policy Route	•		•		•	
	RIP	•		•		•	
	BGP					•	
	OSPF						
CSM	APP Enforcement	•		•		•	
	URL & Keywords Filter	•		•		•	
	Web Content Filter	•		•		•	
	DNS Filter	•		•		•	

Vigor2866 LTE series		Vigor2927 LTE series	
2866L	2866Lac	2927L	2927Lac
1 x A/VDSL/35b/G.Fast + 1 x LTE		1 x GbE + 1 x LTE	
1 x GbE		1 x GbE	
5 x GbE		5 x GbE	
8		8	
1		1	
1		1	
60,000		60,000	
	11a/b/g/n/ ac wave 2		11a/b/g/n/ ac wave 2
	•		•
	•		•
	2 x 2		2 x 2
	2		2
32		50	
16		25	
	•		•
	•		•
	•		•
	•		•
	•		•
	•		•
	•		•
	•		•

Switch

		Smart Lite		Web Smart			
		VigorSwitch G1080	VigorSwitch P1092	VigorSwitch G1085	VigorSwitch P1085	VigorSwitch G1280	VigorSwitch P1280
Ports	Ethernet	8 x GbE	8 x GbE	8 x GbE	8 x GbE	24 x GbE	24 x GbE
	SFP		2				
	SFP/GbE Combo					4	4
	Console						
PoE	Ports		8		8		24
	Power Budget		110		140		340
VLAN	Tag Based	•	•	•	•	•	•
	MAC-Based			•	•	•	•
	Voice			•	•	•	•
	Surveillance			•	•	•	•
	GVRP						
Security	ACL			•	•	•	•
	Storm Control	•	•	•	•	•	•
	IPSG			•	•	•	•
	802.1x						
	DHCP Snooping						
	Loop Protection	•	•	•	•	•	•
Spanning Tree	STP			•	•	•	•
	RSTP			•	•	•	•
	MSTP						
Multicast	IGMP Snooping	•	•	•	•	•	•
	MLD Snooping						
Link Aggregation Group		1	2	8	8	8	8
SNMP				v1/v2c/v3		v1/v2c/v3	
Switch Management		•	•	•	•	•	•

L2 Managed				L2+ Managed				
VigorSwitch G2121	VigorSwitch P2121	VigorSwitch G2280	VigorSwitch P2280	VigorSwitch G2280x	VigorSwitch P2280x	VigorSwitch G2540x	VigorSwitch P2540x	VigorSwitch P2540xh
8 x GbE	8 x GbE	24 x GbE	24 x GbE	24 x GbE	24 x GbE	48 x GbE	48 x GbE	48 x GbE
				4 (SFP+)	4 (SFP+)	6 (SFP+)	6 (SFP+)	6 (SFP+)
4	4	4	4					
•	•	•	•	•	•	•	•	•
	8		24		24		48	48
	140		385		400		400	800
•	•	•	•	•	•	•	•	•
•	•	•	•	•	•	•	•	•
•	•	•	•	•	•	•	•	•
•	•	•	•	•	•	•	•	•
•	•	•	•	•	•	•	•	•
•	•	•	•	•	•	•	•	•
•	•	•	•	•	•	•	•	•
•	•	•	•	•	•	•	•	•
•	•	•	•	•	•	•	•	•
•	•	•	•	•	•	•	•	•
•	•	•	•	•	•	•	•	•
•	•	•	•	•	•	•	•	•
•	•	•	•	•	•	•	•	•
•	•	•	•	•	•	•	•	•
•	•	•	•	•	•	•	•	•
•	•	•	•	•	•	•	•	•
•	•	•	•	•	•	•	•	•
•	•	•	•	•	•	•	•	•
8	8	8	8	8	8	8	8	8
v1/v2c/v3				v1/v2c/v3				
•	•	•	•	•	•	•	•	•

Access Point

		VigorAP 810	VigorAP 802	VigorAP 903	VigorAP 912C	VigorAP 920C	VigorAP 960C
		810	802	903	912C	920C	960C
Band	2.4GHz	•	•	•	•	•	•
	5GHz		•	•	•	•	•
WLAN	Wi-Fi Standard	11b/g/n	11a/b/g/n/ac	11a/b/g/n/ac wave 2	11a/b/g/n/ac wave 2	11a/b/g/n/ac wave 2	11a/b/g/n/ac/ax
	Antenna	2 x 2	2 x 2	2 x 2	2 x 2	2 x 2	2 x 2
		Detachable	Internal	Detachable	Internal	Internal	Internal
	AirTime Fairness	•	•	•	•	•	•
	Roaming	•	•	•	•	•	•
LAN	Ethernet	5 x FE	1 x GbE	5 x GbE	1 x GbE	2 x GbE	1 x GbE
	PoE-PD	•		•	•	•	•
	PoE-PSE						
Mode	AP	•	•	•	•	•	•
	Range Extender	•	•	•	•	•	•
	Mesh		Node	•	•	•	•
Mounting (Desk/Wall/Ceiling/Pole)		D/W	Plug	D/W	C/W	C/W	C/W
Environment		Indoor	Indoor	Indoor	Indoor	Indoor	Indoor
USB Port		1		1			
Max. Data Rate		300 Mbps	300 + 867 Mbps	400 + 867 Mbps	300 + 867 Mbps	400 + 867 Mbps	400 + 867 Mbps
Built-in RADIUS		•	Client	•	•	•	•
Central Management		•	•	•	•	•	•
Stand-alone Operation		•	•	•	•	•	•

VigorAP 1000C	VigorAP 918R series	
1000C	918R	918RPD
•	•	•
Dual	•	•
11a/b/g/n/ ac wave 2	11a/b/g/n/ ac wave 2	11a/b/g/n/ ac wave 2
2 x 2	2 x 2	2 x 2
Internal	Detachable	Detachable + Internal
•	•	•
•	•	•
2 x GbE	1 x GbE	2 x GbE
•	•	•
		•
•	•	•
•	•	•
•	•	•
C/W	W/P	W/P
Indoor	Outdoor	Outdoor
400+867+867 Mbps	400 + 867 Mbps	400 + 867 Mbps
•	•	•
•	•	•
•	•	•

DrayTek

www.draytek.com

Tel: +886-3-5972727 Fax: +886-3-5972121 E-mail: info@draytek.com

Trademarks and brand names are the properties of their respective owners.
The scope of delivery and other details are subject to change without prior notice.

Copyrights © DrayTek Corp. All right reserved.